

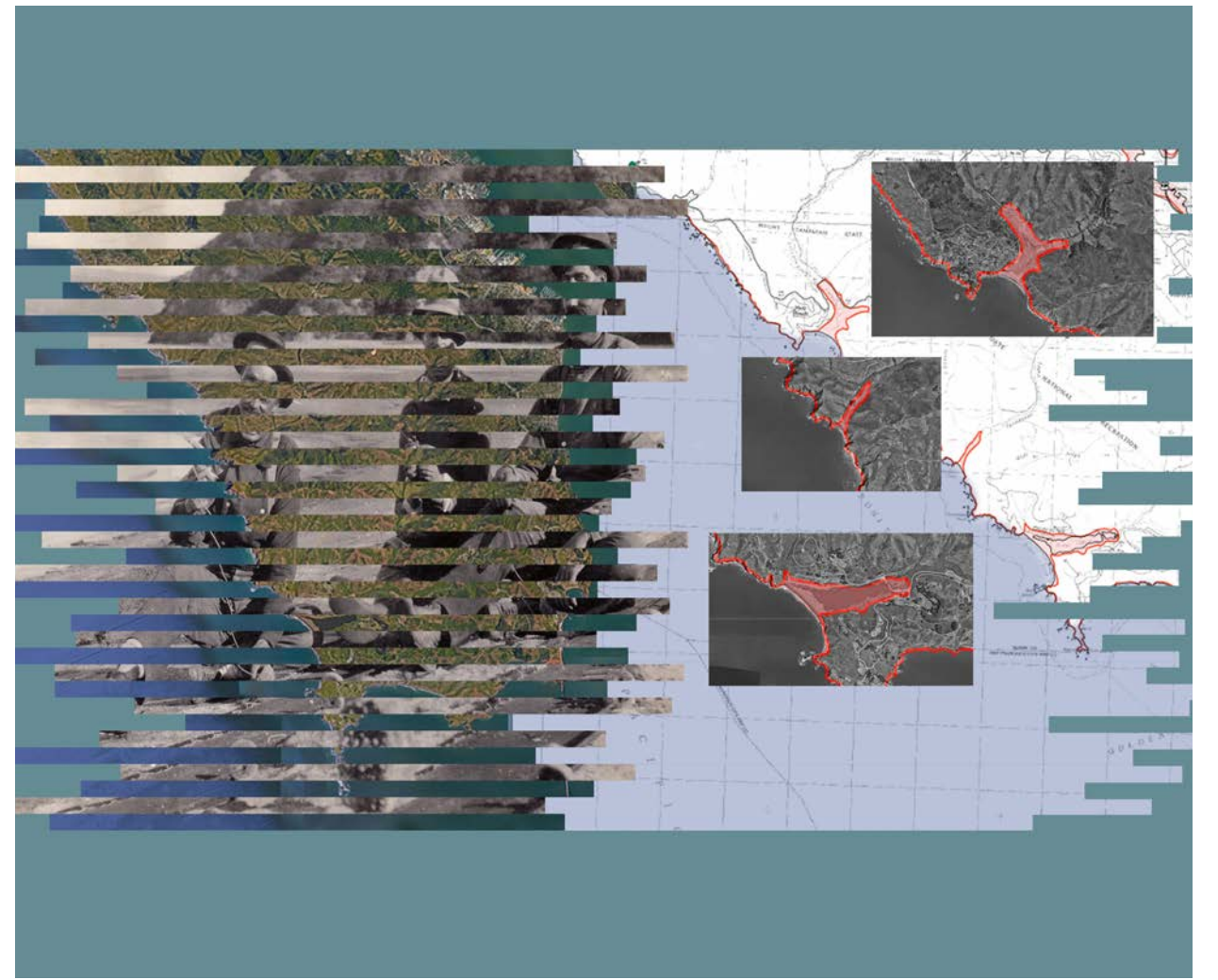
INTERTWINING THE LANDSCAPE

An Experiential Walk Through the History of the Miwok People

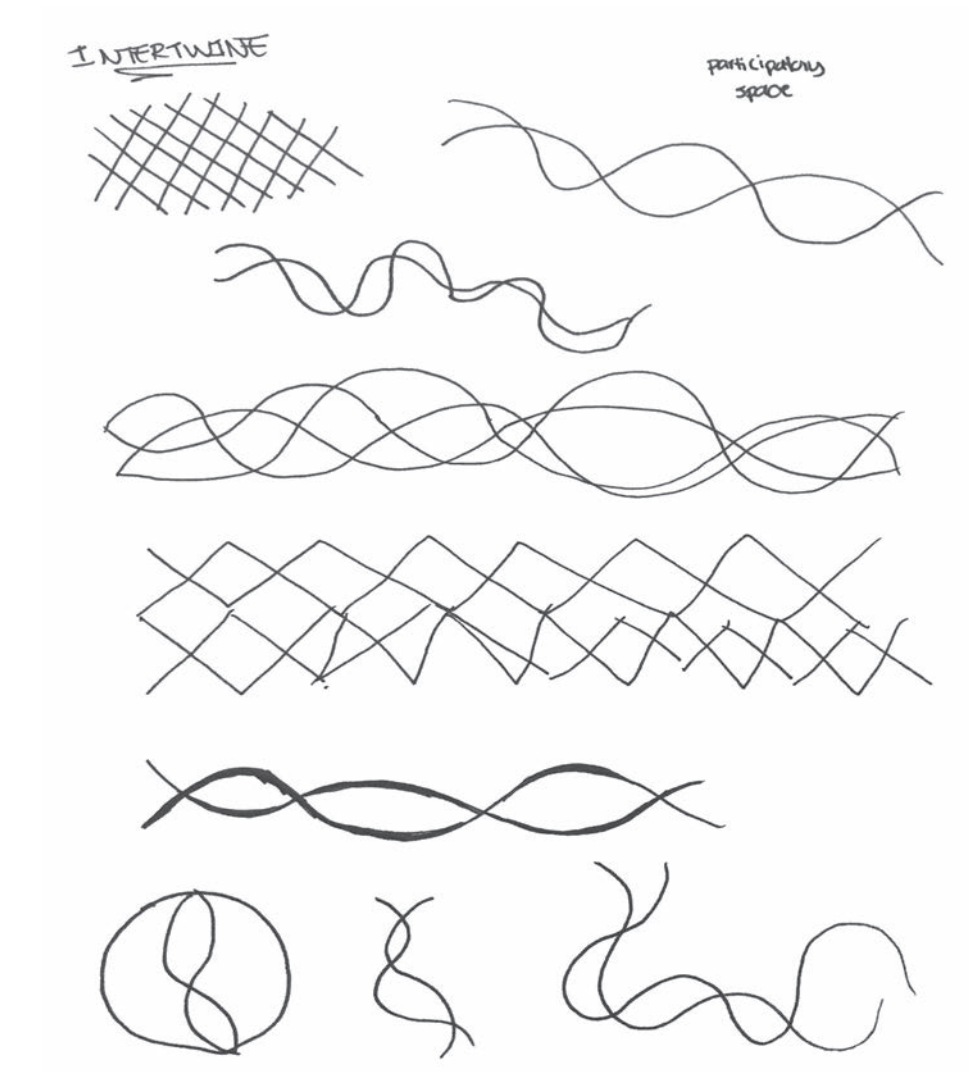
Claire Corbett | LDA 184 | SQ 2020 | UC Davis

SECTION FF

DESIGN PROCESS



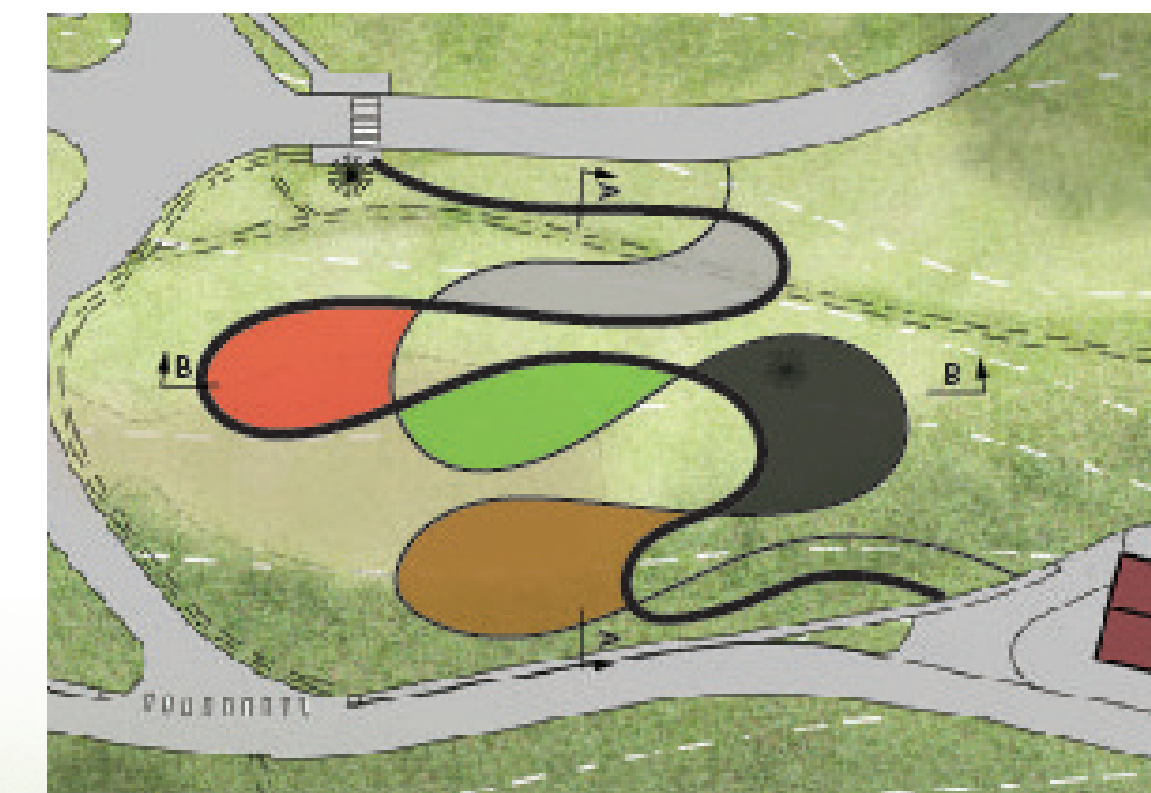
CARTOGRAPHIC ANALYSIS



CONCEPT DEVELOPMENT



DESIGN DEVELOPMENT

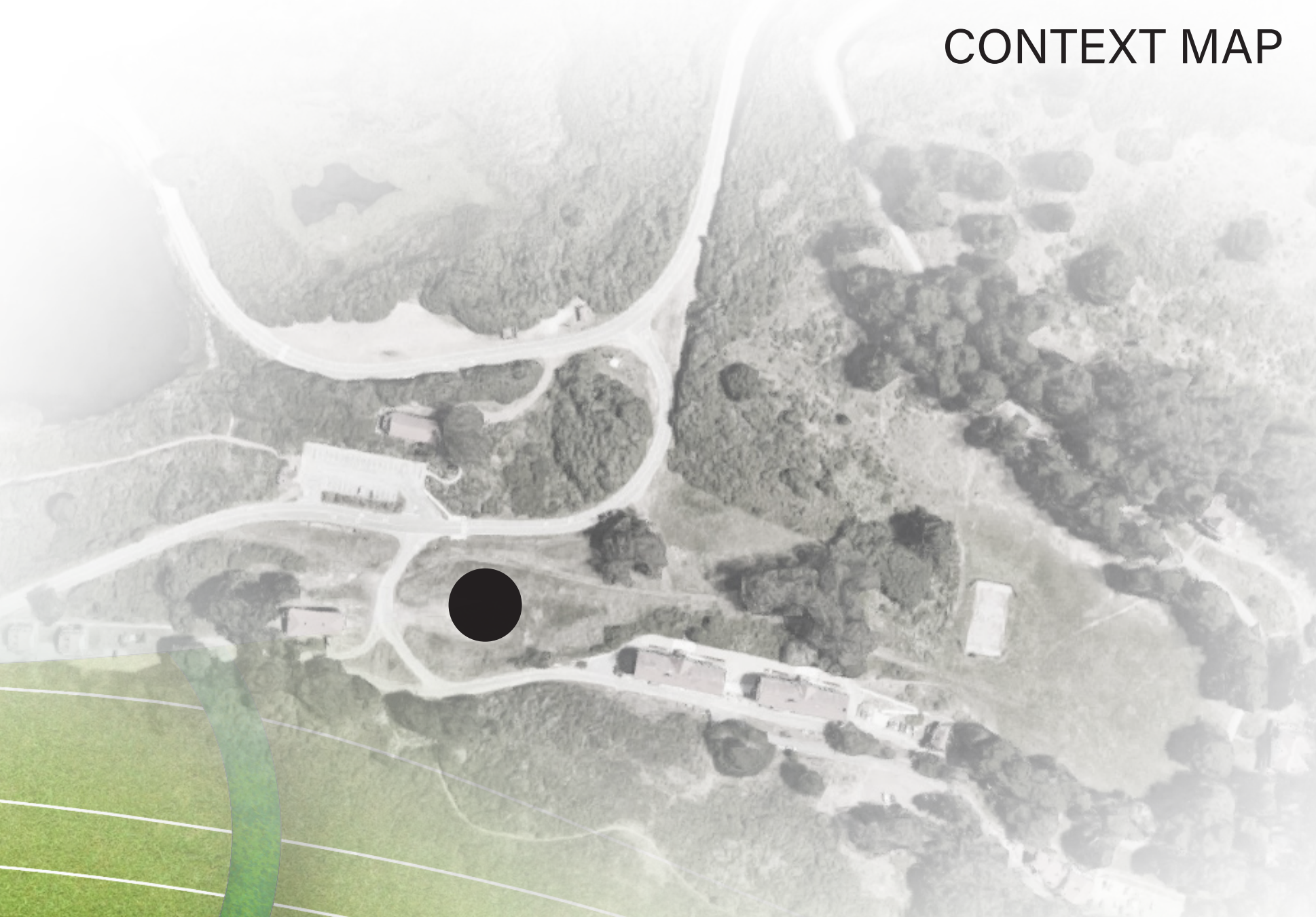


SCHEMATIC DESIGN



ROAD CONCRETE PAVERS DG PATH SEDGE DG PATH DG PATH GARDEN DG PATH GARDEN SEDGE SEAT WALL DG PATH SEDGE GROUNDCOVER SEDGE DG PATH CONCRETE PAVERS

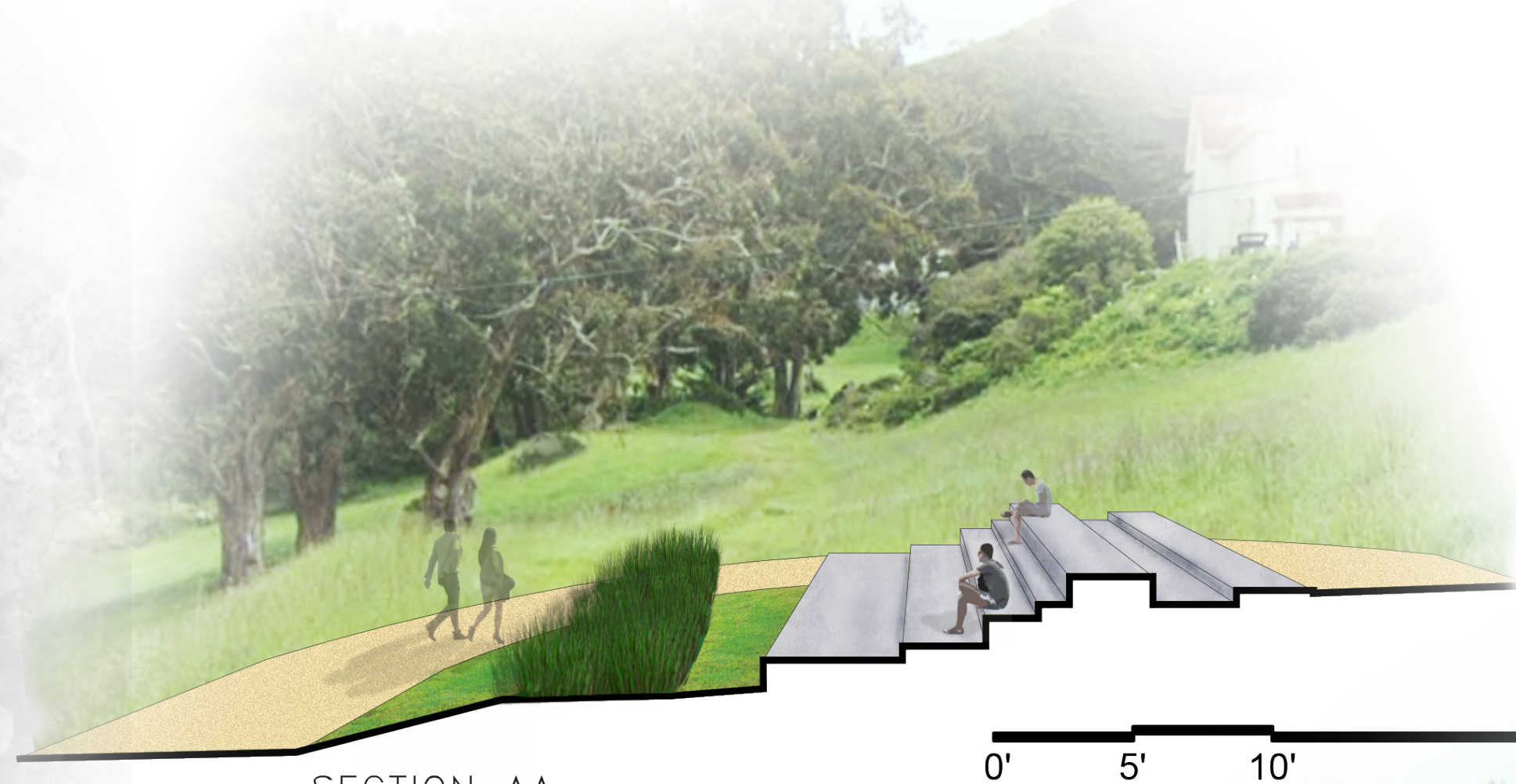
0' 10' 20' 40' 60'



CONTEXT MAP



0' 10' 20' 40' 60'



SECTION AA

0' 5' 10' 20'

AREA 2

HISTORIC EVENT: 1783-1817
Miwok people are converted to Christianity through the Spanish missions
MATERIAL: MOSAICS
Tiles broken apart and turned into something new



SECTION BB

0' 5' 10' 20'



SECTION CC

0' 5' 10' 20'

AREA 4

HISTORIC EVENT: 1834
Many Miwok become slaves on the ranches of the new California land grant owners
MATERIAL: METAL
Cold, rigid, forcing



SECTION DD

0' 5' 10' 20'



SECTION EE

0' 5' 10' 20'

AREA 1

HISTORIC EVENT: 1760s
Europeans arrive in California and take over the land, bringing foreign diseases that caused the Miwok population to greatly decline
MATERIAL: CONCRETE
Man-made, harsh, dominates the land

AREA 3

HISTORIC EVENT: 1834
Mission period ends, Miwok are free of control from the Spanish missionaries
MATERIAL: PLANTS
Growth, freedom, life

AREA 5

HISTORIC EVENT: 1837
Smallpox epidemic kills many Miwok and further declines the population
MATERIAL: ROCKS
Earthy, grounded