

GREEN WAVES

SIMON HAN | LDA 184
MARIN HEADLANDS, CA

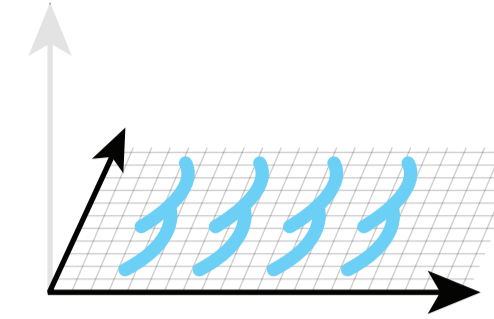


- ▶ The force of the ocean doesn't stop where lands begins.
- ▶ The mountains share the same fluidity of water.
- ▶ "Be water, my friend." -Bruce Lee

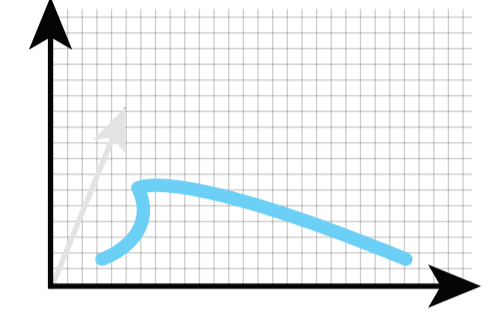
DESIGN GOAL

Seldom do we find a site with land and water elements blended as well as the Marin Headlands. The parade ground, however, misses the presence of water. By creating mounds that mimic rolling waves crashing into the shoreline, this design attempts to break the boundaries of where water ends and where land begins. Above that, this design aim to provide artful rest areas for HCA residents and nearby visitors.

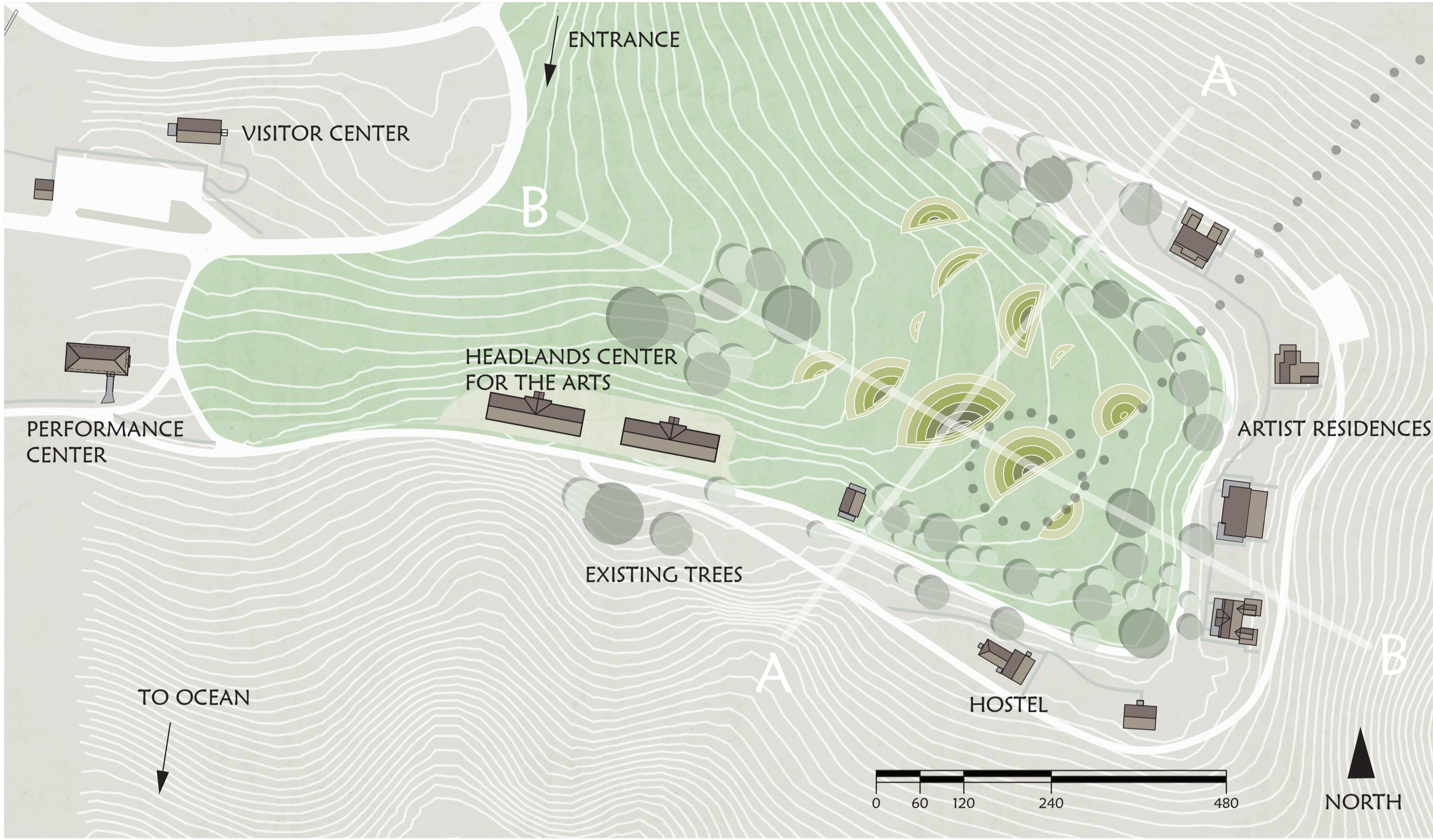
SITE ELEMENTS



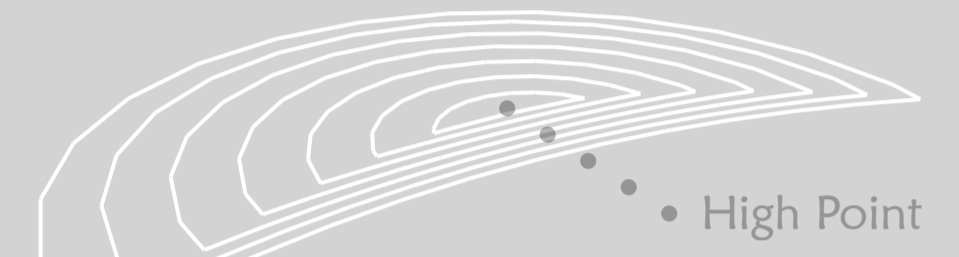
Horizontally, waves are separated apart. Big waves take water from small ones and balance out at last.



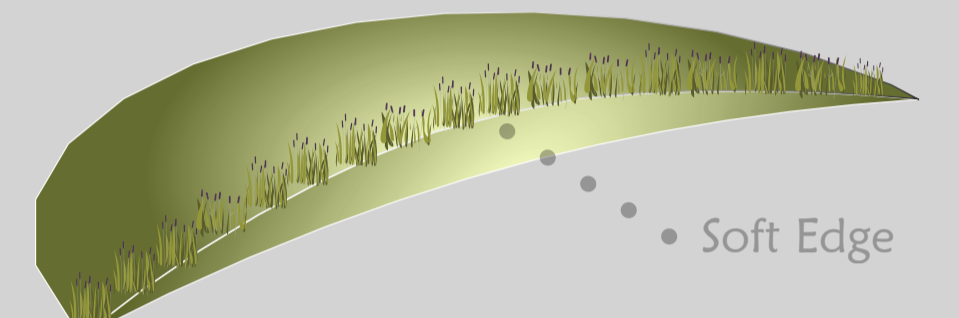
Vertically, the slope on the two sides of the wave form vary. Waves also vary in height.



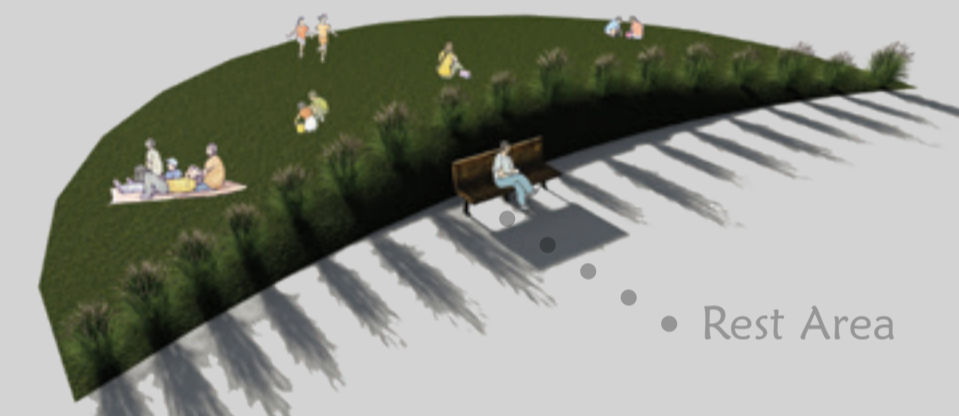
WAVE DESIGN



1ft Contours • Slope 20% • 6ft Tall



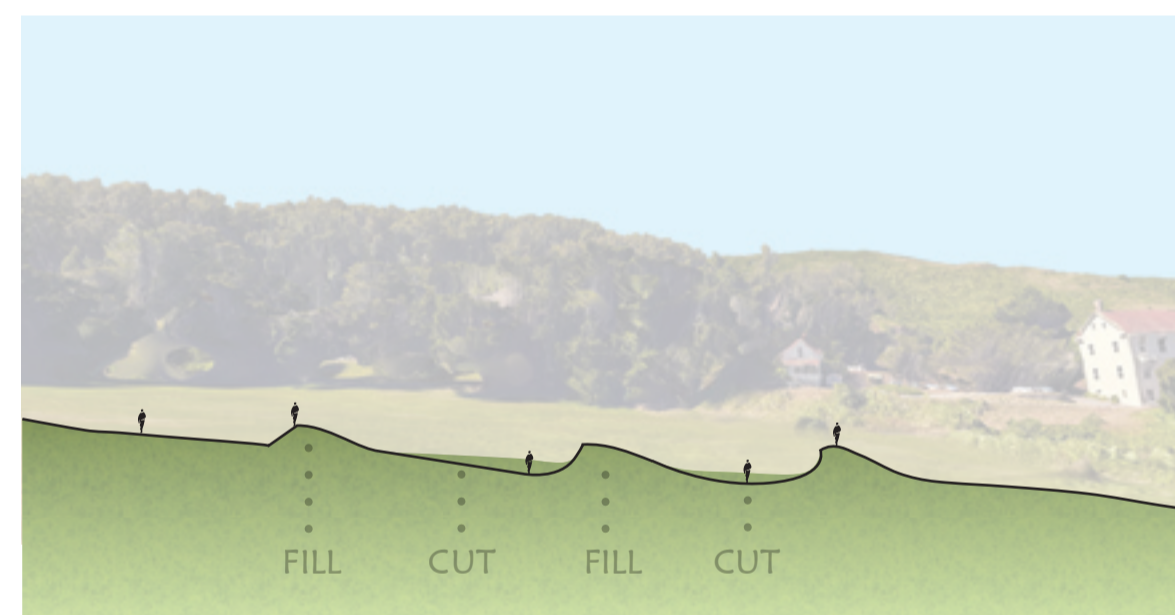
Native Meadow Grass • Feather Grass



Rest • Picnic • Play • Contemplate



SECTION AA



SECTION BB

This design introduces the element of water through landforms mimicing waves in three dimensions.

Section AA depicts horizontal movement of waves in a cluster, while Section BB depicts vertical movement of waves crashing into shore.

Cut and fill will be balanced because mounds will be built with existing ground materials.

