

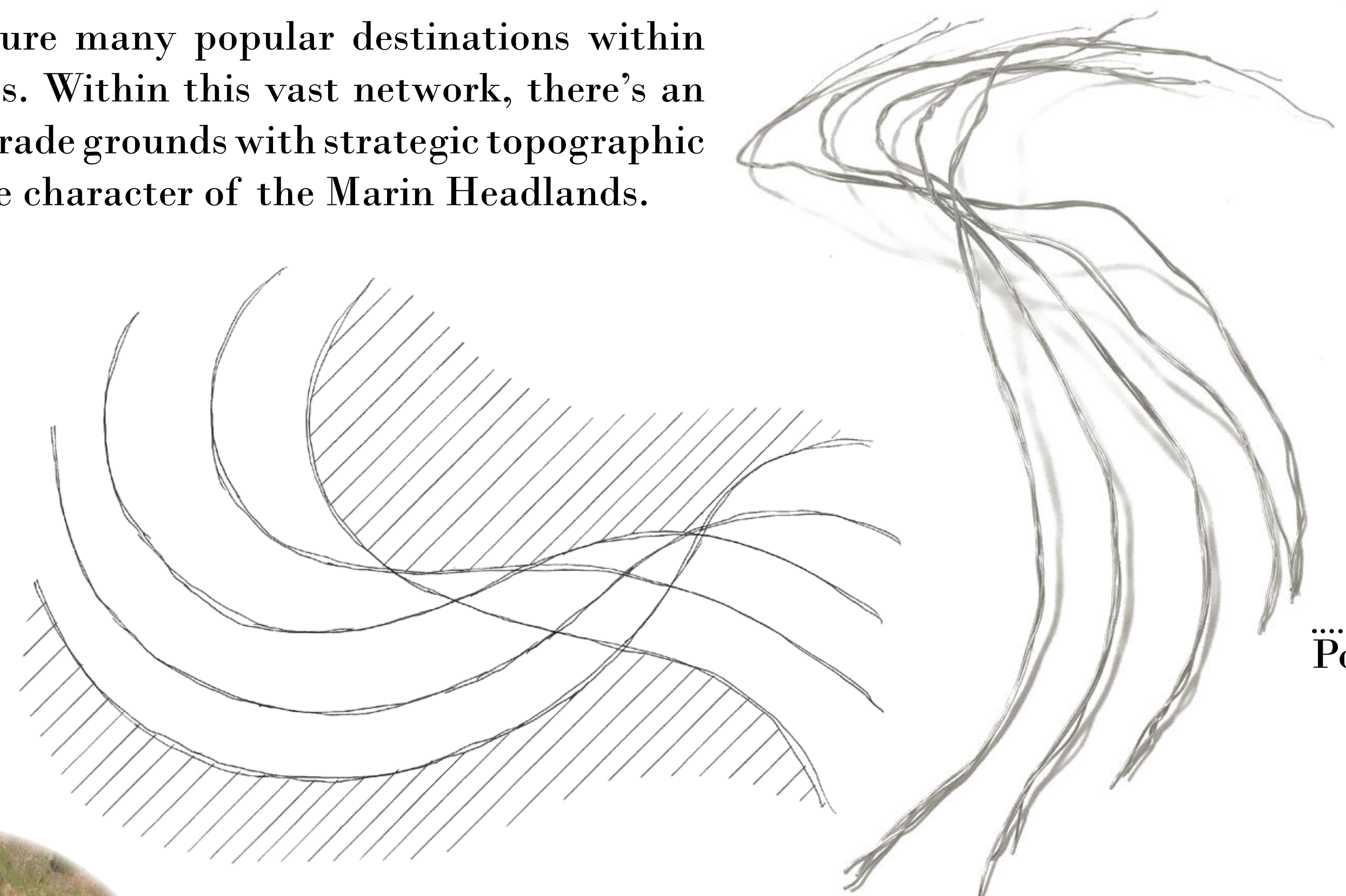
IMPRINTING THE MARIN HEADLANDS

HEADLANDS CENTER FOR THE ARTS | PARADE GROUNDS

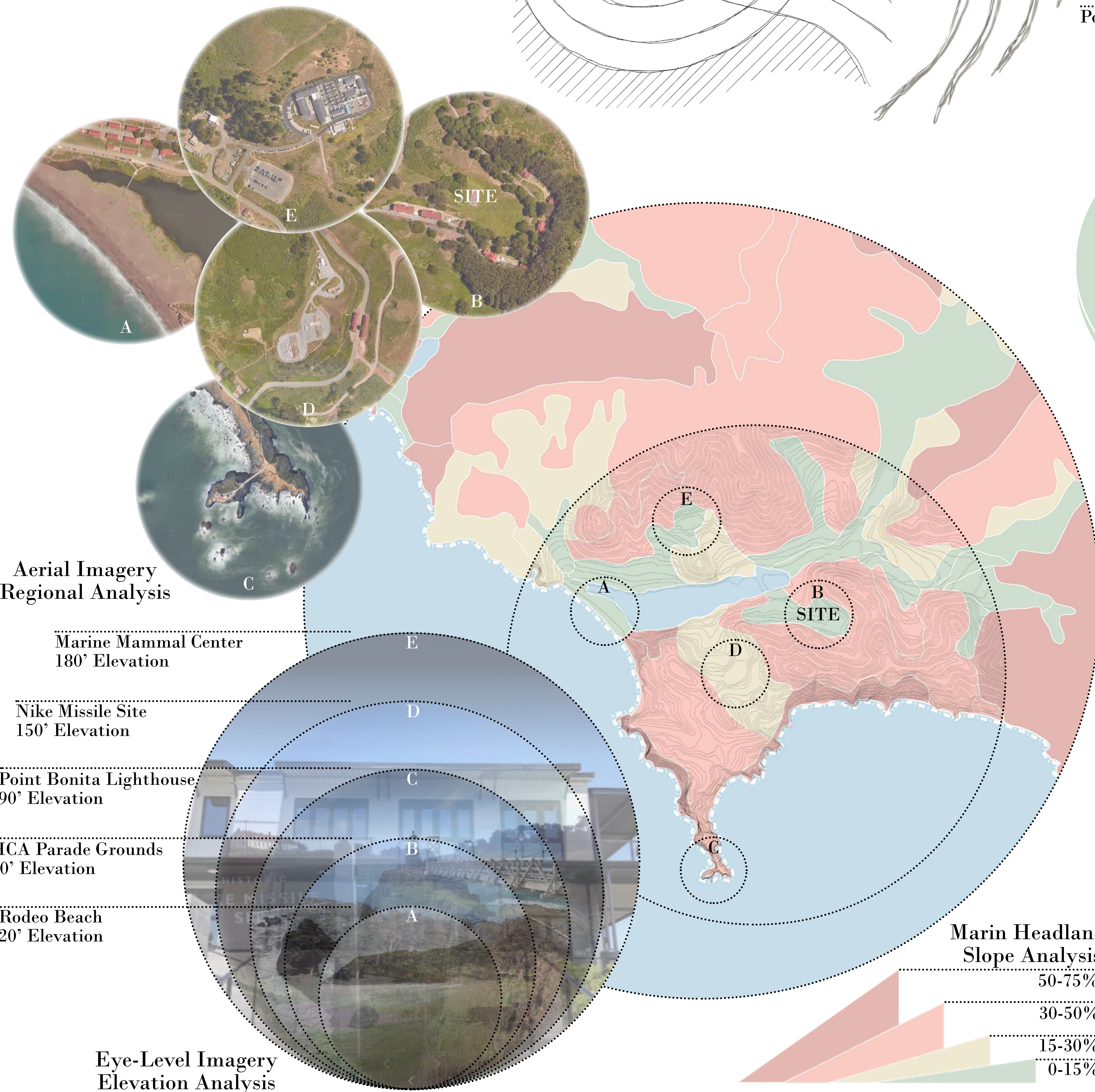
TONY ROGERS | LDA 184 | SPRING 2020 | UC DAVIS

MEANDERING

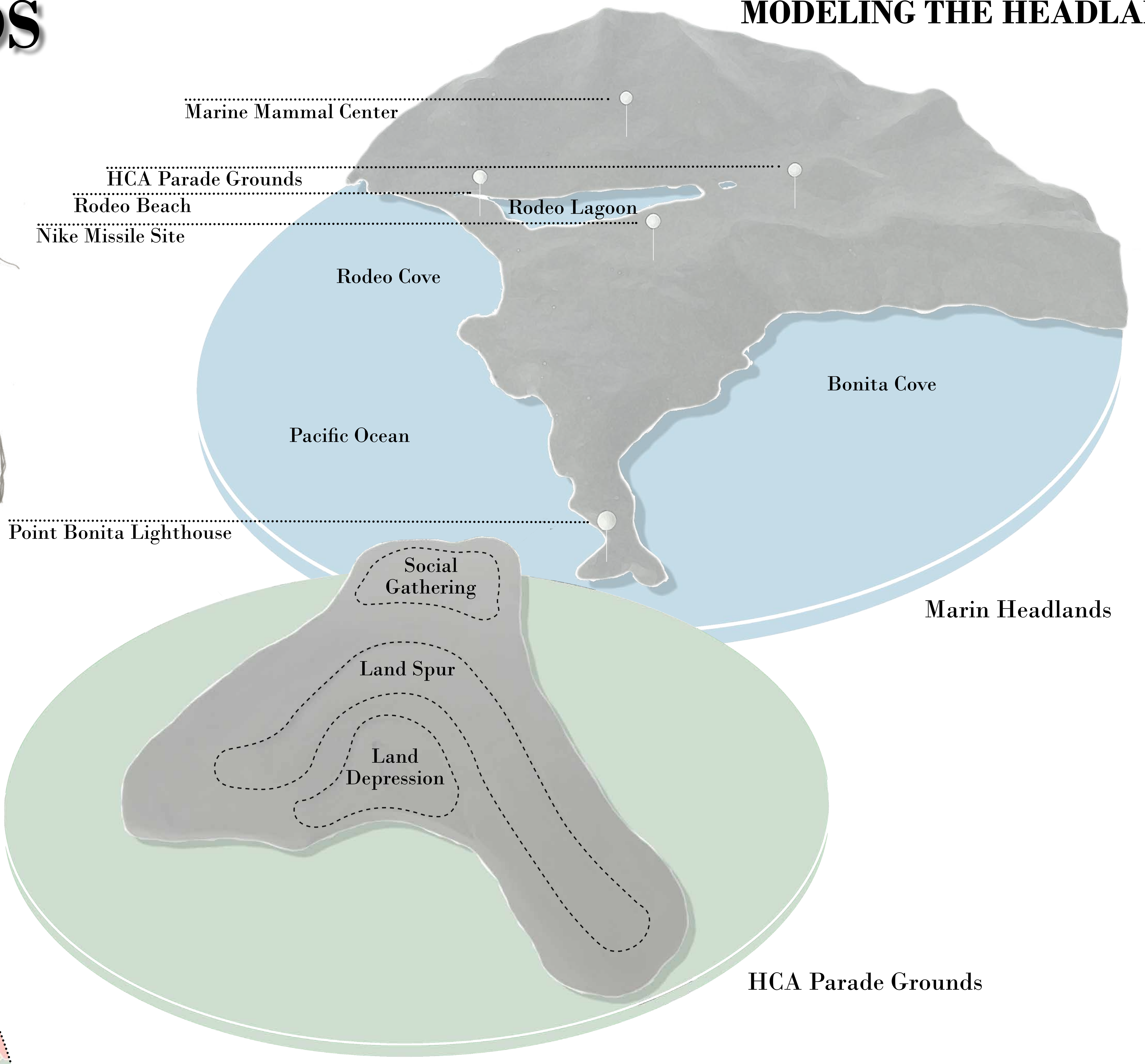
Known for its admirable landscape, the Marin Headlands feature many popular destinations within this region which provide a variety of recreational opportunities. Within this vast network, there's an opportunity to further enhance the user experience of the HCA parade grounds with strategic topographic and vegetative transformations to ultimately embrace the unique character of the Marin Headlands.



INTERPRETING TERRAIN

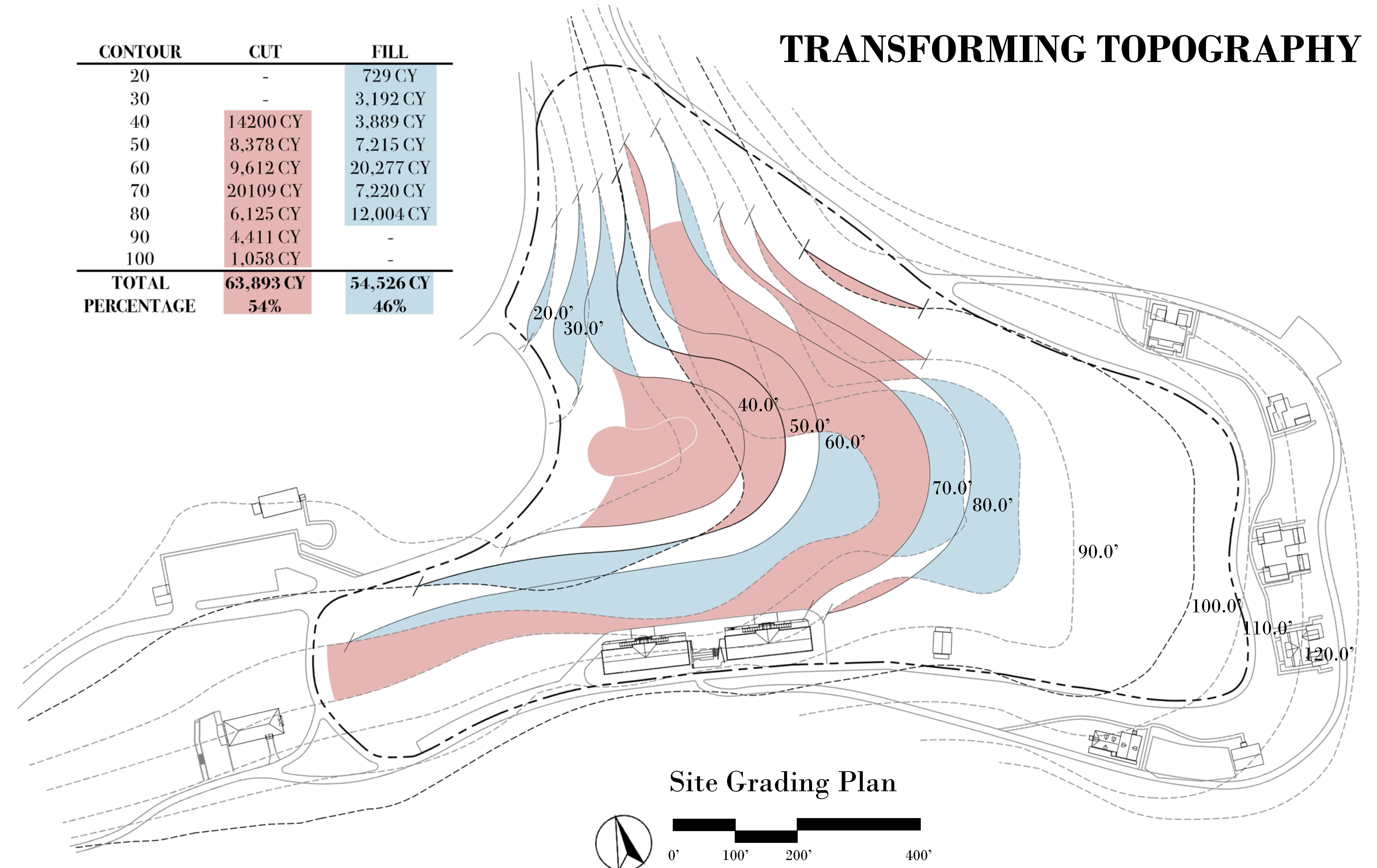


MODELING THE HEADLANDS



CONTOUR	CUT	FILL
20	-	729 CY
30	-	3,192 CY
40	14,200 CY	3,889 CY
50	8,378 CY	7,215 CY
60	9,612 CY	20,277 CY
70	20,109 CY	7,220 CY
80	6,125 CY	12,004 CY
90	4,411 CY	-
100	1,058 CY	-
TOTAL	63,893 CY	54,526 CY
PERCENTAGE	54%	46%

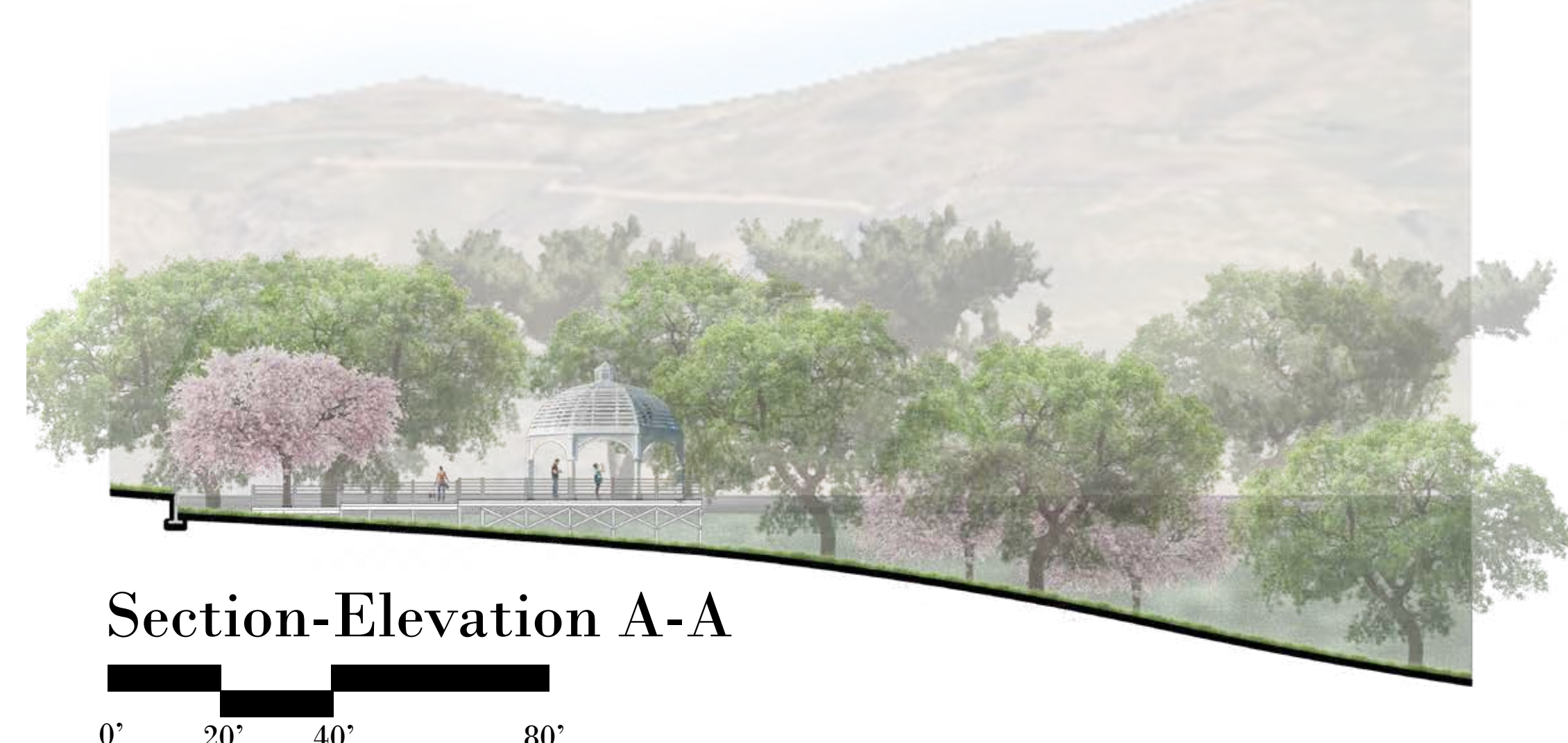
TRANSFORMING TOPOGRAPHY



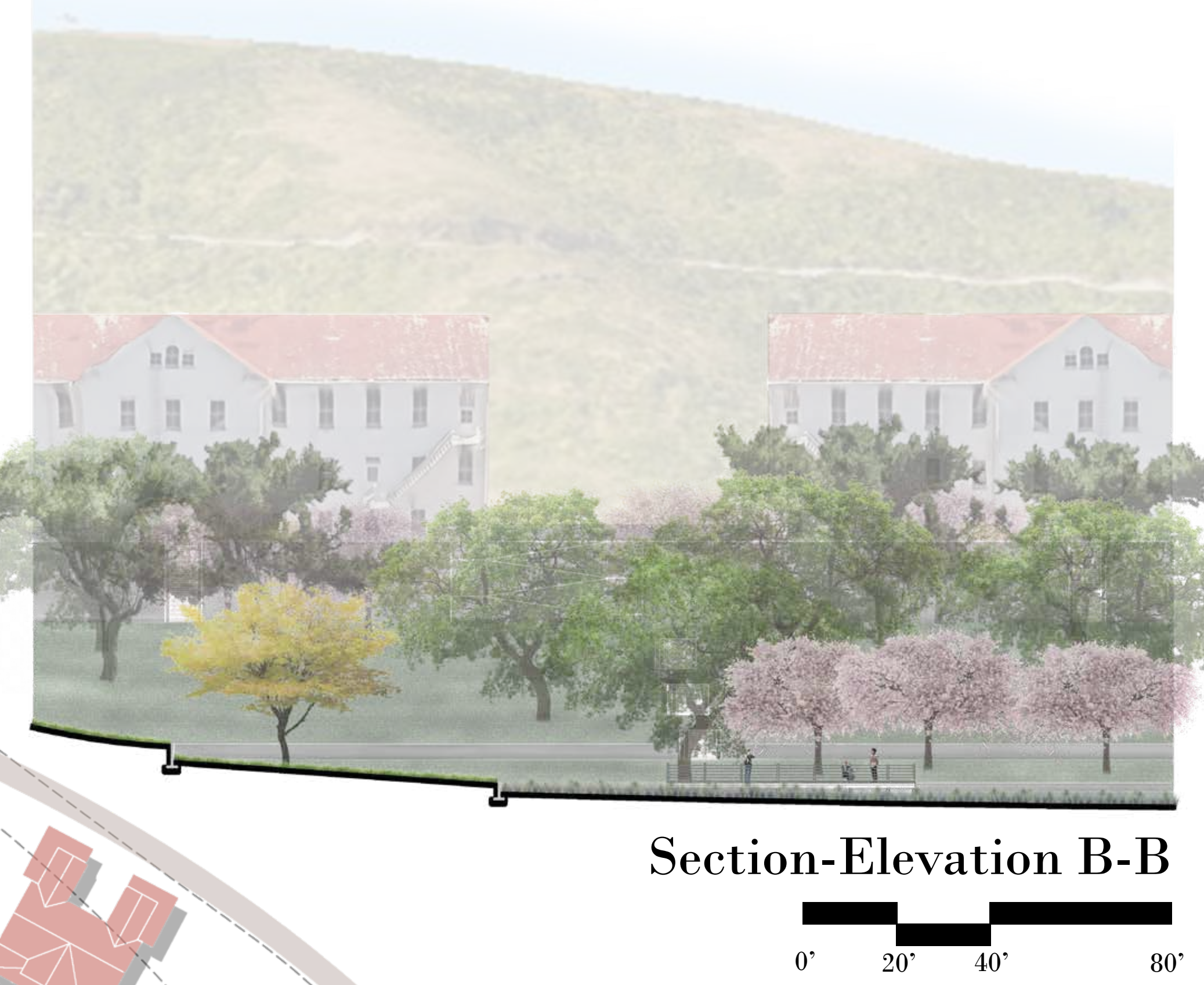
ENHANCING THE USER EXPERIENCE

The HCA parade grounds will attract both visitors and residents with additional on-site parking conveniently located near the primary and secondary trails which circulate throughout the site. These grounds feature several unique tiers which provide a variety of user experiences throughout the site. The wildlife observation deck, located on the first tier, overlooks an inundation zone which will collect seasonal stormwater and attract local wildlife. The scenic observation deck, located on the second tier, overlooks the Pacific Ocean and the Rodeo Lagoon which would provide opportunities for users to capture memorable photographs. Multiple event spaces, located on the third tier, provide more intimate social gathering opportunities for artist events. Ultimately, these grounds will primarily incorporate California native vegetation for screening, wildlife, and ornamental benefits.

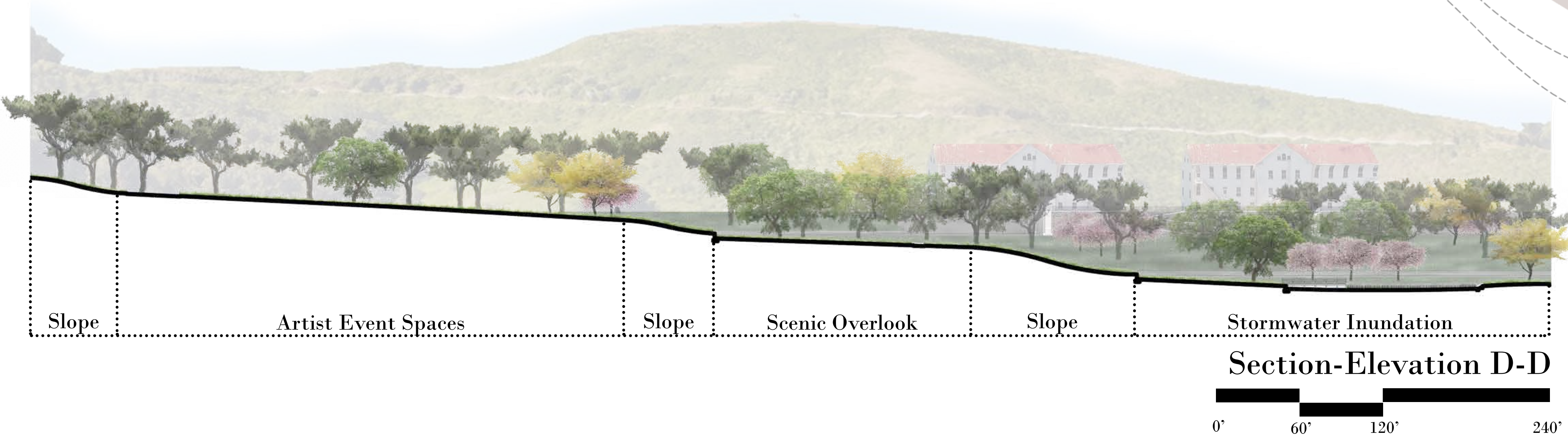
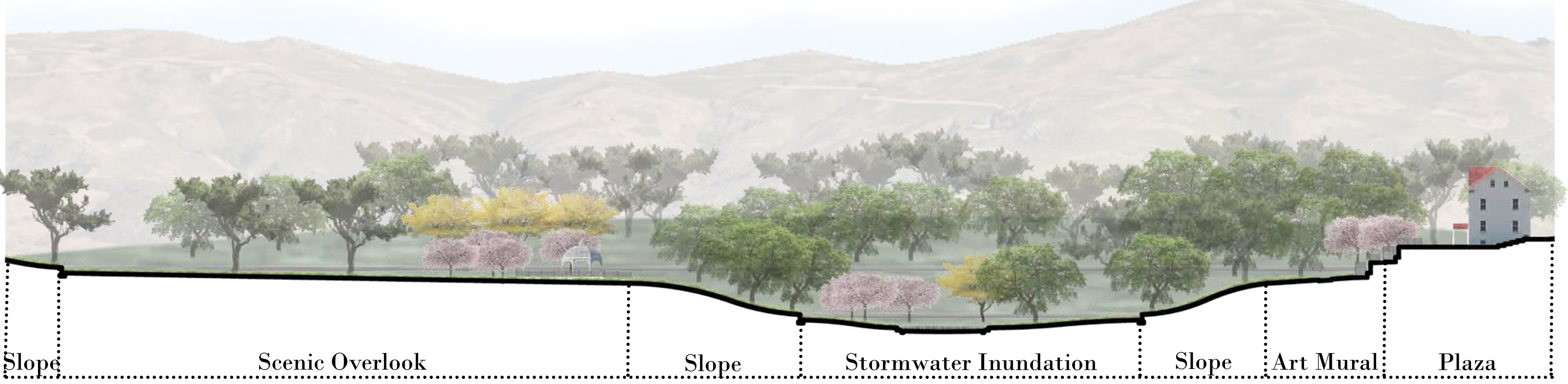
SCENIC OBSERVATION



WILDLIFE OBSERVATION



RELATIONSHIP BETWEEN THE TIERS



CA Native Trees and Meadows

Scenic Observation Deck Shade Structure

Wildlife Observation Deck Stormwater Inundation

Artist Mural Retaining Wall, 20"

Stairs and ADA Ramp

Secondary Trail, 6'

Artist Event Spaces

Retaining Walls, 42"

Primary Trail, 8'

Site Layout Plan