

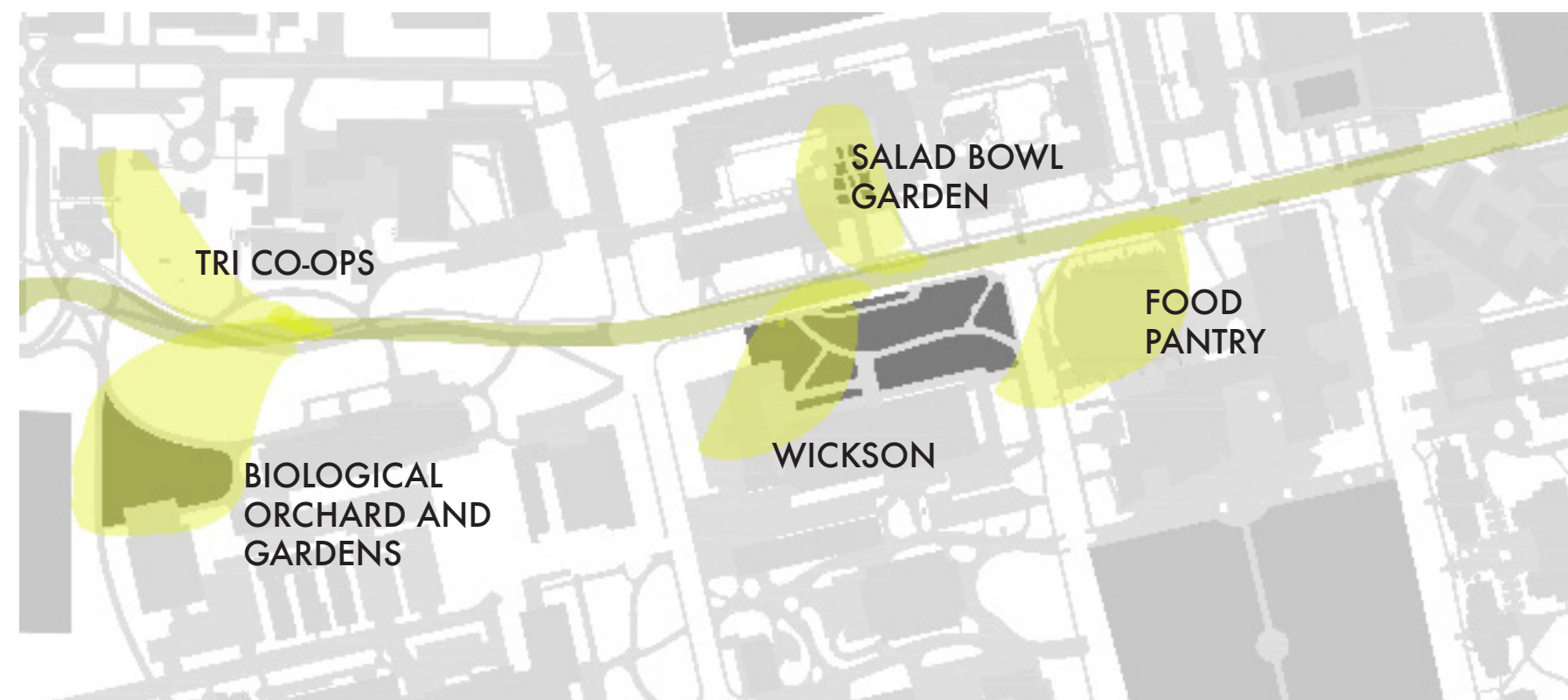
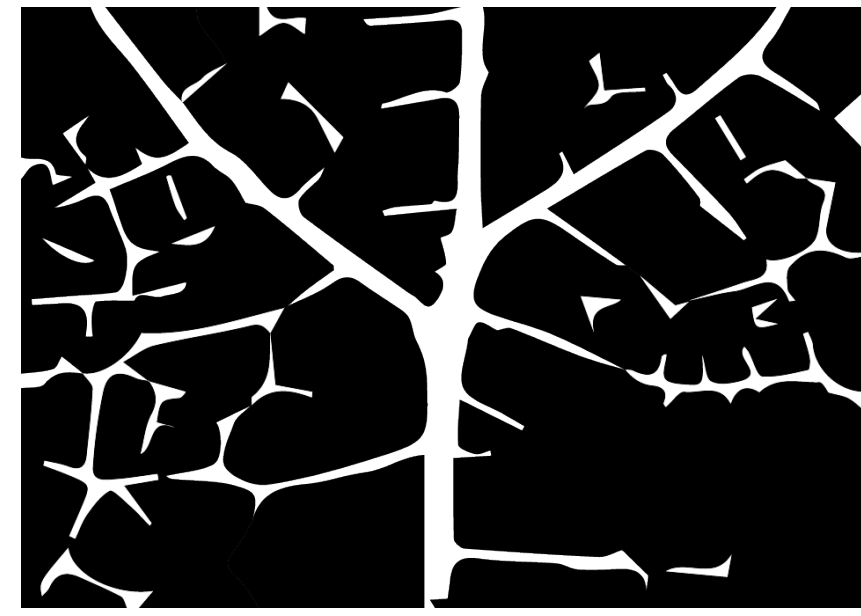


# Rethinking Food Through Edible Gardens: UC Davis Veggietrail Proposal

Irona Lee  
Senior Capstone Project 2017

## PART I: CENTRAL AXIS

central axis



The first part of this project is with establishing a 0.3 mile Veggietrail that includes the Salad Bowl Garden, Biological Orchard and Gardens, and the Food Pantry. The concept for this trail is inspired by phyllotaxy. More specifically, the central axis of a plant with leaflets coming off of it. This trail will be made with a "YOU ARE ON THE VEGGIETRAIL" stencil and signages that inform people about each site and its function in the trail. This trail is proposed as the first phase of a possible larger trail that includes the other 10 edible gardens on campus.



**WHAT IS THE VEGGIETRAIL?**

You are on the veggietrail! More specifically, you are on ONE of the student-run edible sites that make up this veggietrail. These sites provide fresh produce for students like you! All of this produce gets donated to the Food Pantry in Lower Freeborn Hall. Keep walking, and check out all the other sites!

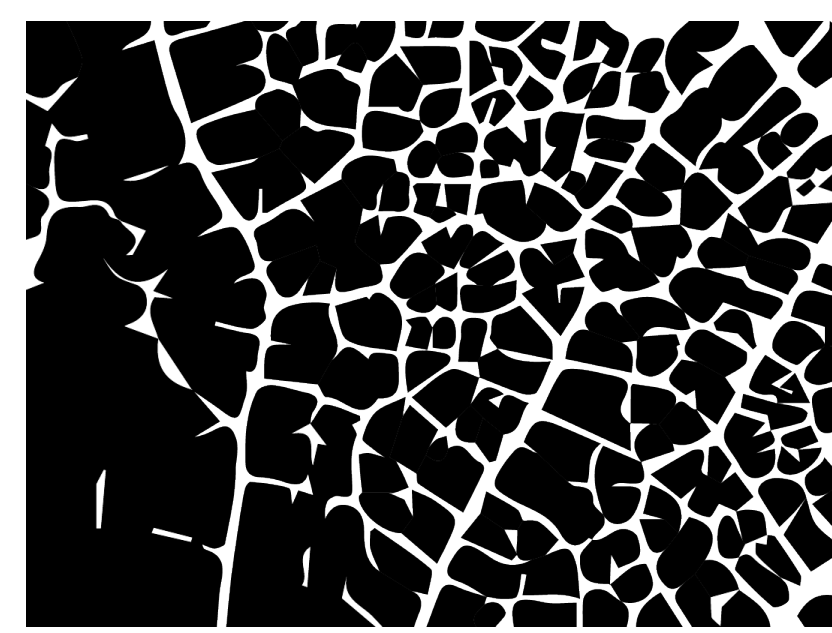
## PART II: VENATION + DISSECTION

The second part of this project picks up from the central axis and into the node or leaf, zooming in on the venation and dissection. The pattern becomes more angled and random, and this pattern is overlaid onto the proposed site at Wickson Hall.

Wickson Hall has a sizeable courtyard that is in the middle of some of the most busy streets of campus. The west section of the courtyard specifically seems to lend itself to become an edible landscape due to its proximity to electricity and water, and its exposure to full sun. It also has an existing Fruit Tree Garden that has been planted there by the Pomology department.

After the overlay of the pattern, the west end of the courtyard can be divided into four different functions: 1. the existing fruit tree garden, 2. hydroponic garden, 3. terraced vegetable garden, and 4. eating and seating. The gardens on this site will be maintained and run by the Edible Landscaping Internship under the Arboretum and Public Gardens, with partnerships with faculty and other groups. It will be up to the interns to make the gardens forage-friendly (free for picking by the public), but if they choose to donate, the produce will be donated to the Food Pantry at the Lower Freeborn Hall. This site demonstrates different ways to grow food, different types of food that grow (fruits and vegetables), increases the amount of food being accessible to students, and is also the perfect addition to the Veggietrail in terms of proximity and location.

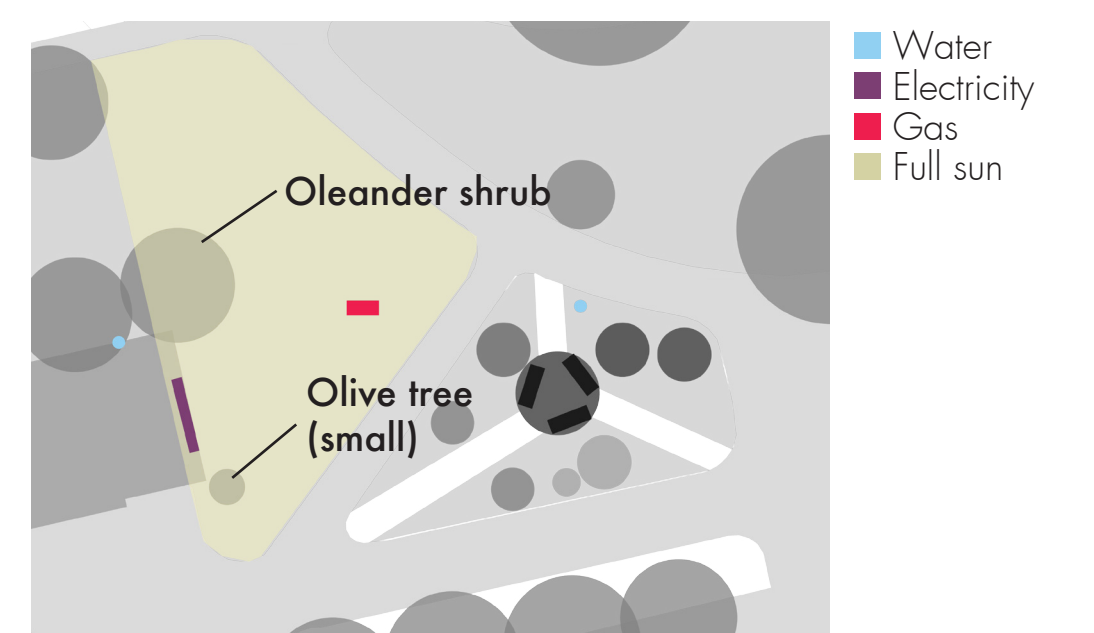
venation + dissection



where is wickson?



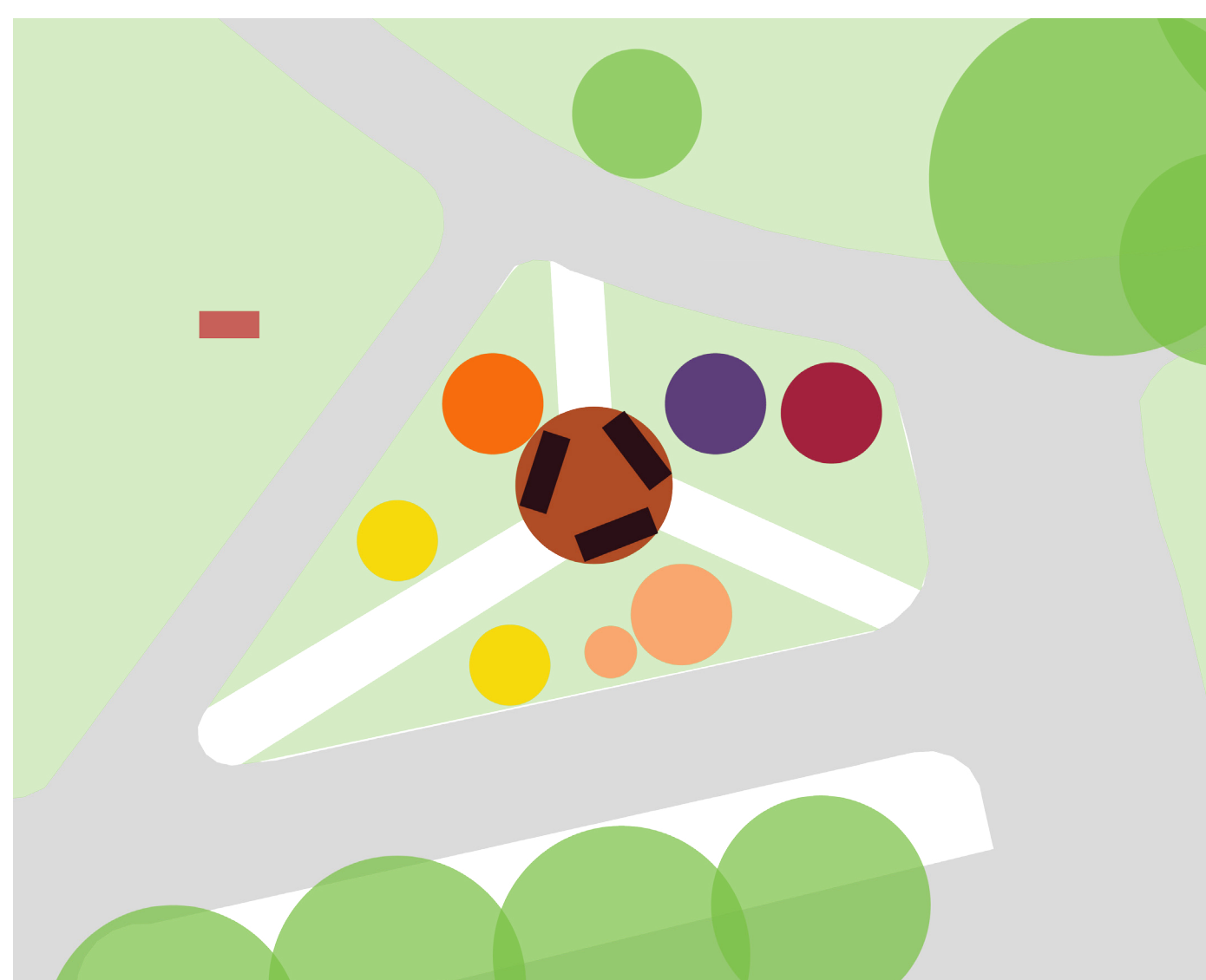
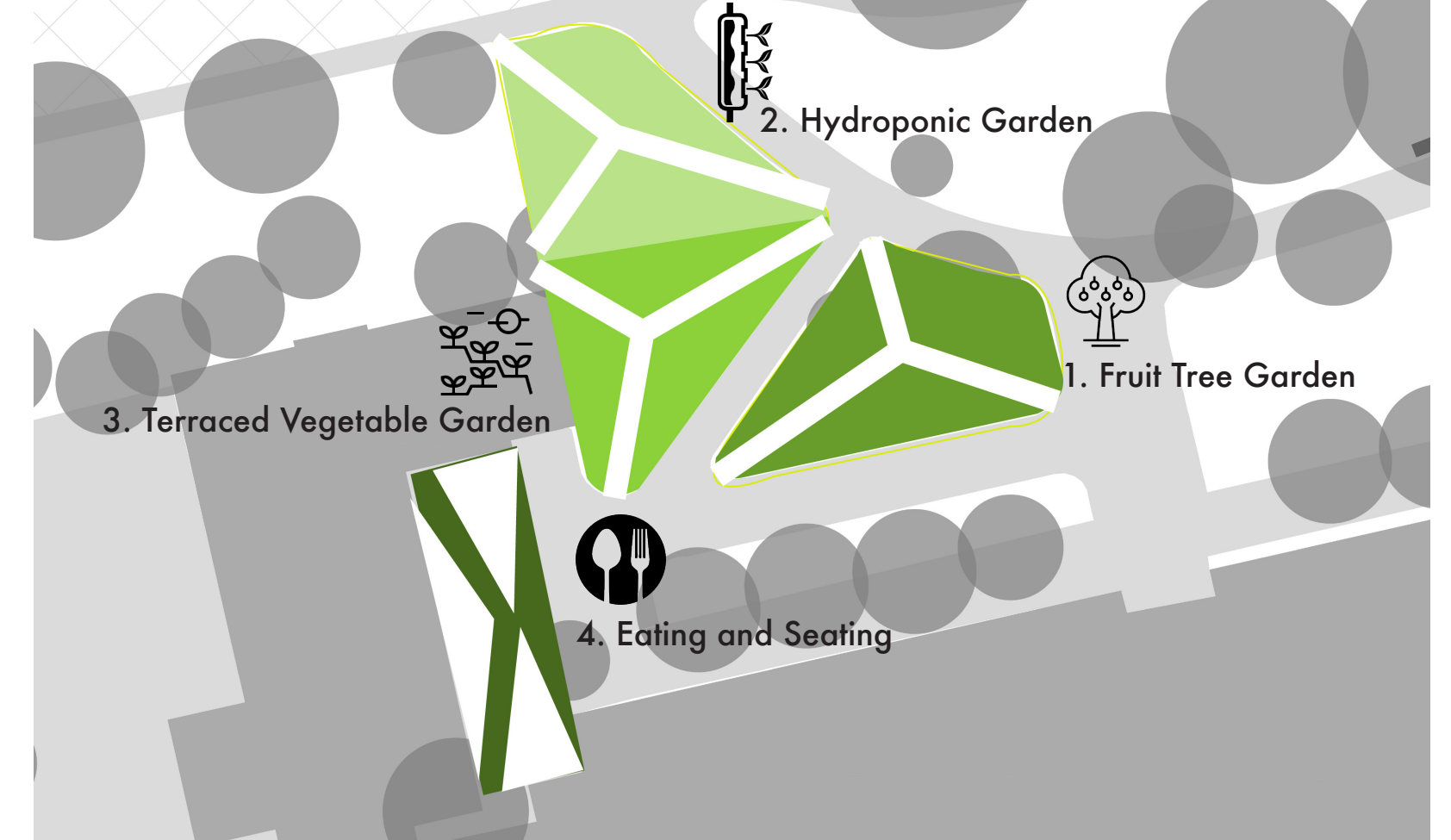
resources



existing map



proposal



1. Existing Fruit Tree Garden

Planted by the Pomology department, this fruit tree garden demonstrates a growth of a diverse group of fruit trees. Here is an opportunity to partner with other departments and also teach students about fruit trees and growing them in urban areas.

**LEGEND**

- Kumquat
- Fuyu Persimmon (*Dispyrus kaki*)
- Plum (*Prunus salicina*)
- Bing Cherry (*Prunus avium*)
- Dwarf Peach (*Prunus persica*)



2. Hydroponic Garden

This hydroponic garden serves the educational purpose of the proposal in exploring innovative ways to grow food in an urban area. It also allows for partnering up with the engineering department, and also maximizes food safety.

**HOW DOES THIS WORK?**

This hydroponic garden is an experimental garden that grows vegetables with just water and nutrients - no soil! The electricity pumps up the nutrient-filled water and feeds it to each pocket.



3. Terraced Vegetable Garden

The terraced garden maximizes each plot available for beds by stacking but also maximizes food safety with its elevation. It also minimizes pest disturbance.



4. Eating and Seating

This area hosts shade structures, picnic benches, and a washing station. Currently, the space is very underutilized despite its opportunistic location next to the Memorial Union. The washing station is proposed primarily for keeping food safety protocols, which differs depending on whether or not the garden is forage-friendly.