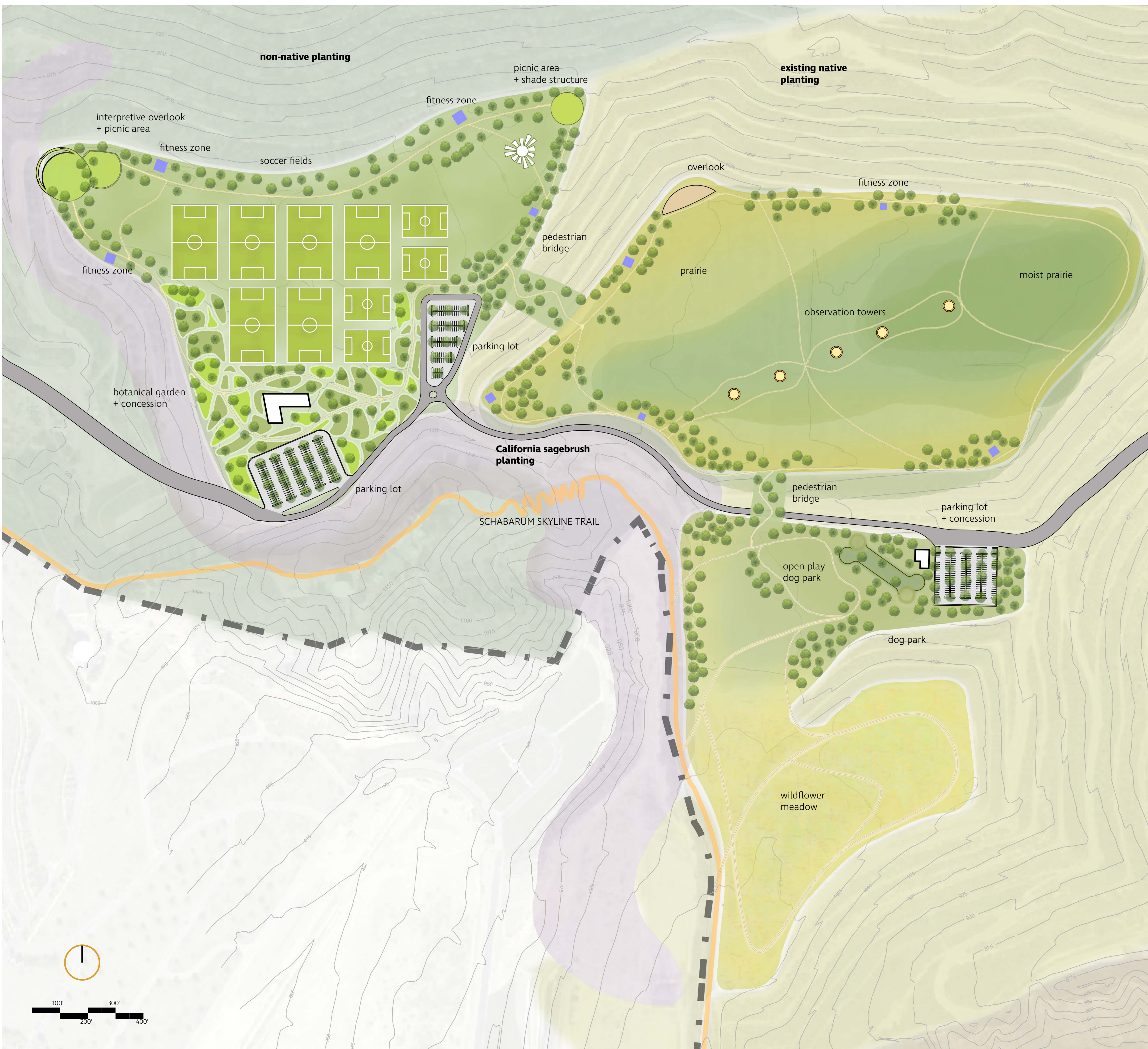


# RE-VISUALIZING LANDFILL RECLAMATION

MARTYN LEGASPI

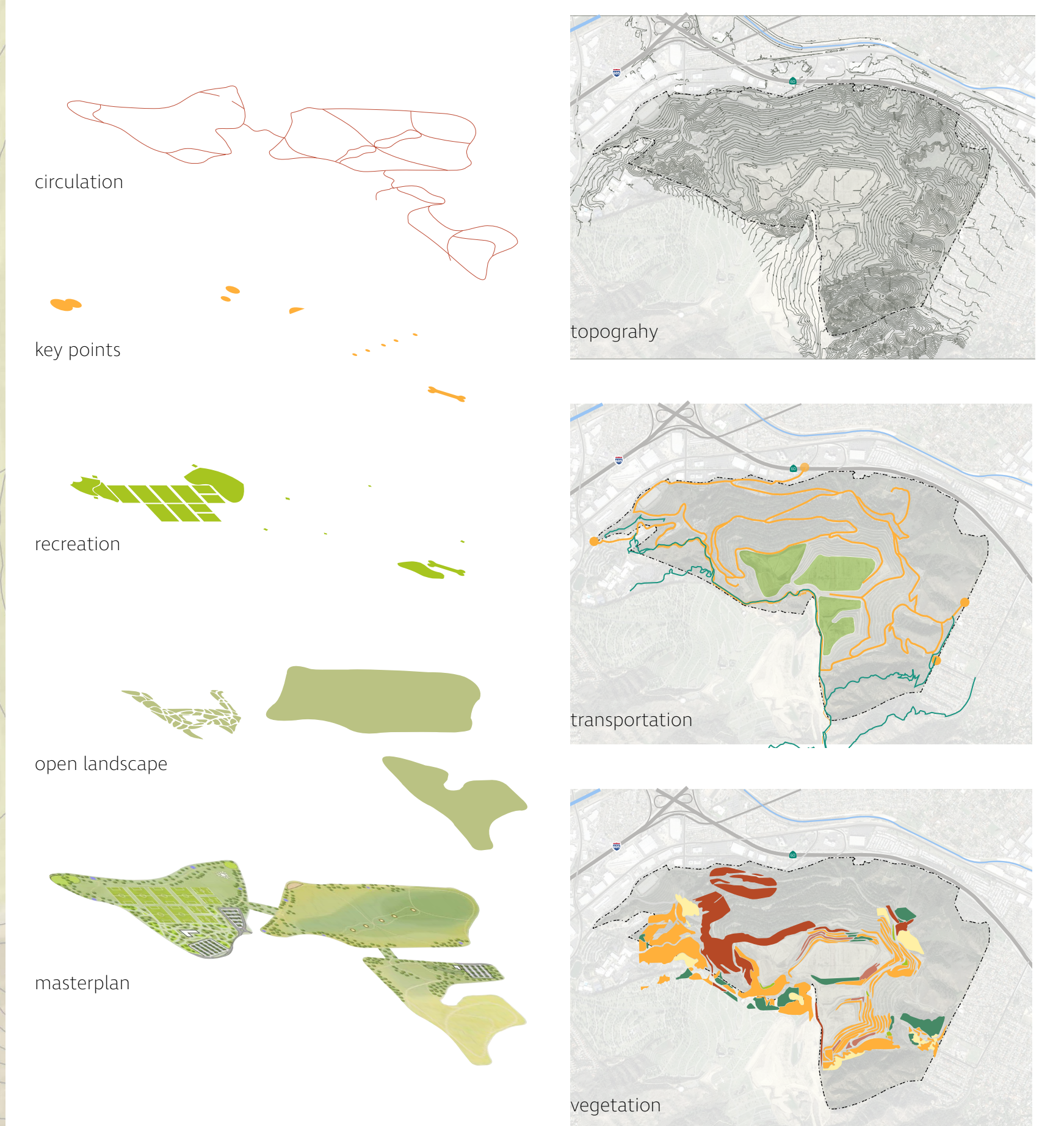
## PUENTE HILLS LANDFILL



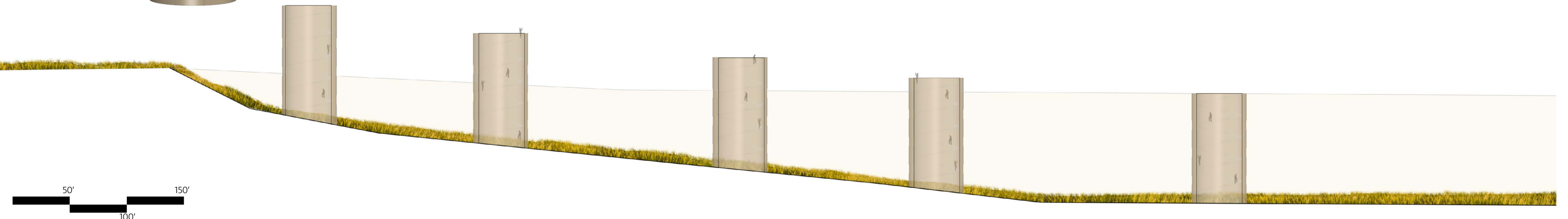
### ABSTRACT

The closure of the Puente Hills Landfill, located within the San Gabriel Valley in Southern California, magnifies an opportunity for open space development. Sitting along a wildlife corridor, surrounded by a sprawling community, and atop a 500 foot hill, the landfill has the potential to reincarnate into a public park. Unlike most landfill parks this public park will encompass habitat restoration, community recreation, and interactively educate users on the site's stormwater management practice. This revisualized reclaimed landfill park incorporates the community's needs as well as the environment's necessities.

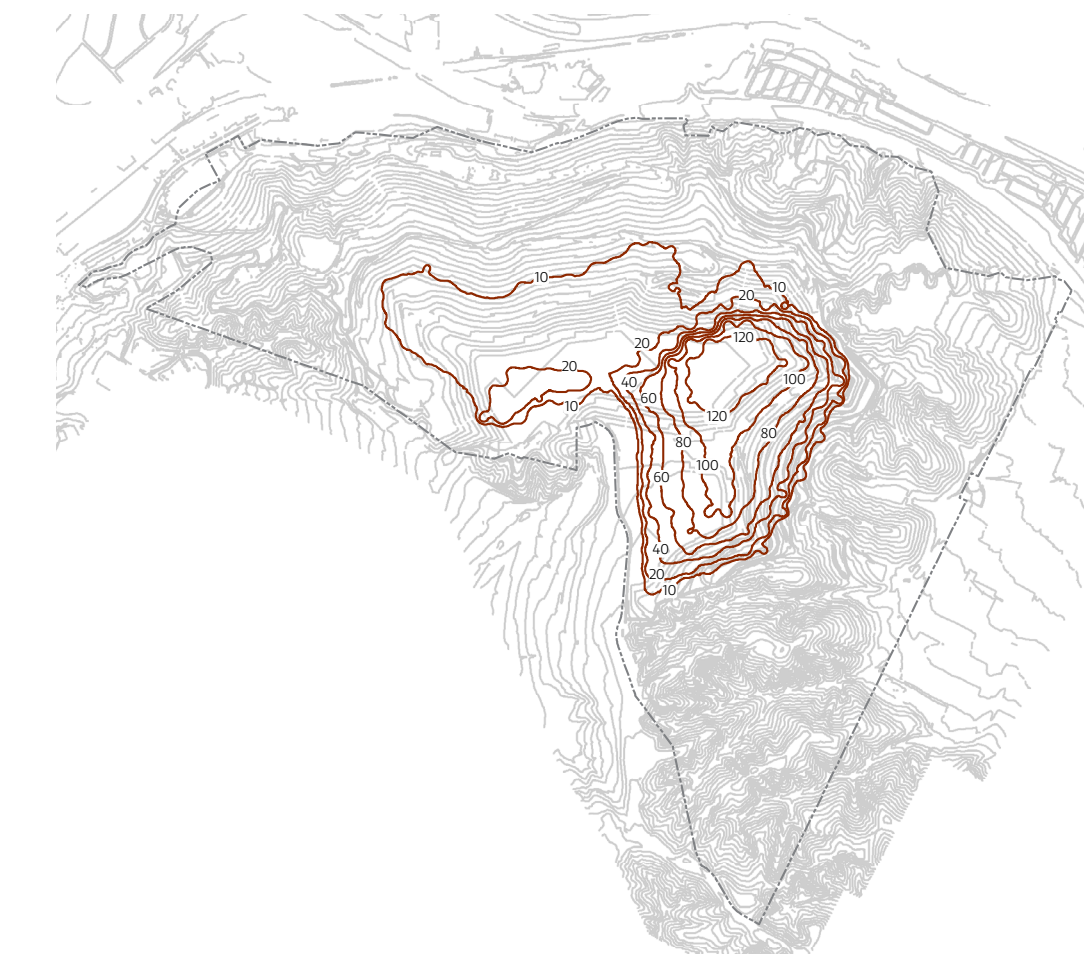
- GOALS**
- 1 COMMUNITY RECREATION
  - 2 HABITAT RESTORATION
  - 3 STORMWATER MANAGEMENT + EDUCATION



### OBSERVATION TOWERS



### LAND SETTLEMENT



Land settlement of this landfill was strategically planned for it to occur at its most severity at the eastern side of the landfill. While still in operation, engineers of the site distributed trash throughout the landfill based on their decomposing rates. This allowed for a strategic placement of settlement projections. Although there is data showing the different settlement rates in a periodic manner one can always expect different outcomes, due to the complexity of nature.